

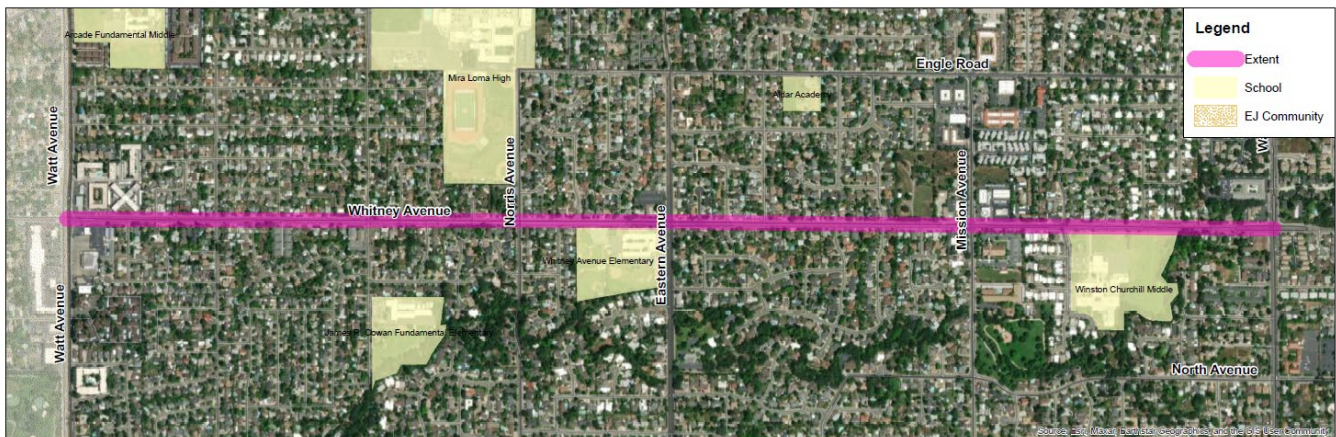
Summary: SacDOT will submit grant applications for two projects:

- Whitney Avenue Road Diet & Multimodal Improvements (Previously presented to DAC)
- Safe Passage: Protecting Active Modes with Sacramento Commuter Rail Expansion

Whitney Avenue Road Diet & Multimodal Improvements

Grant Program: Regional Active Transportation Program (ATP), due 9/30/24

The project addresses multimodal safety and comfort concerns along a 2-mile section of Whitney Avenue between Watt Avenue and Walnut Avenue – a low volume corridor providing access to several elementary and middle schools and a high school. The project would convert the roadway from two-lanes to one-lane per direction (“road diet”) with a continuous center turn lane. Additional improvements include construction of a Class IV bikeway or buffered Class II bike lanes, sidewalk infill, curb extensions, formalized on-street parking, high-visibility crosswalks, ADA ramp improvements, and non-infrastructure programming. The planning level cost estimate for the project is approximately \$15.3 million with a grant request of \$3 million for pre-construction costs, which could be pursued under the ATP large infrastructure category. ATP funding categories being considered include large infrastructure, small infrastructure, and the ATP quick-build program. *This project was also submitted to the State ATP in June 2024.*



Safe Passage: Protecting Active Modes with Sacramento Commuter Rail Expansion

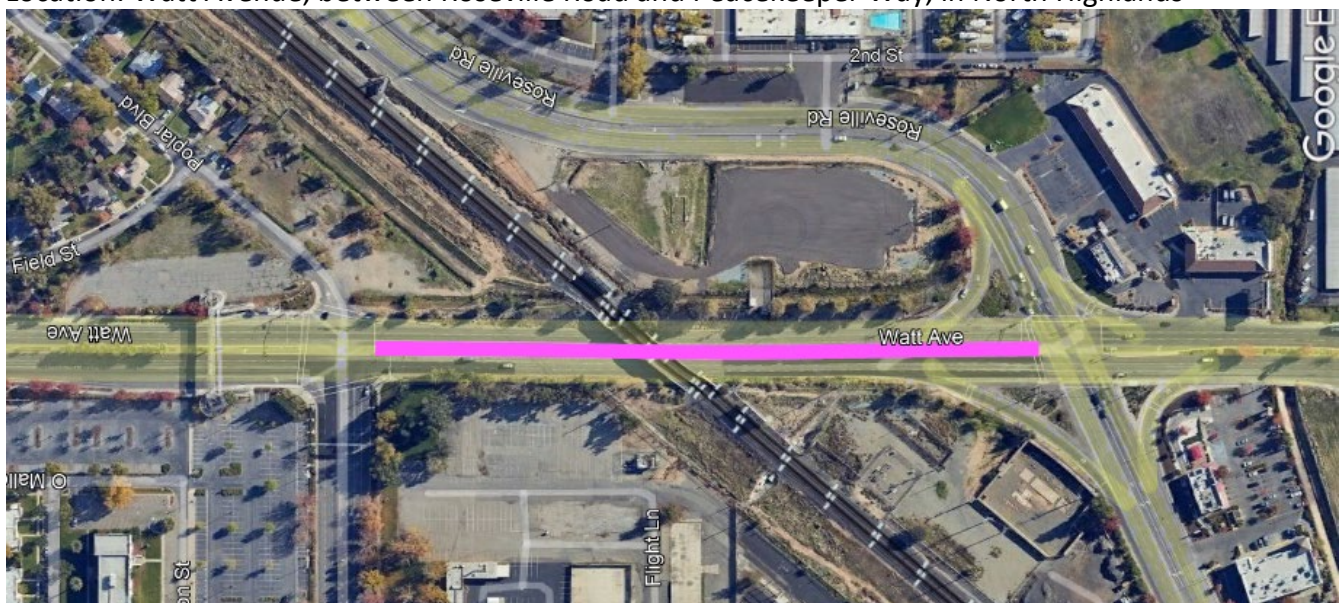
Grant Program: Reconnecting Communities Pilot (RCP) Program, due 9/30/24

Description: The project would complete the Safe Passage Project Approval & Environmental Document (PA&ED) phase for protected multimodal infrastructure along Watt Avenue, between Roseville Road and Peace-keeper Way, under the Union Pacific Railroad (UPRR) overpass. The County is seeking to deliver this project in conjunction with the Capitol Corridor Joint Powers Authority’s Sacramento to Roseville Third Track Project Phase 2, which will widen the railroad overpass to accommodate a third track to increase service frequency of regional commuter rail. The project is necessary to ensure equitable access to community and regional destinations and transportation options in anticipation of planned and programmed investments that support densification and sustainable development in the North Highlands Environmental Justice Community in northern unincorporated Sacramento County. *This project was also submitted to the State ATP in June 2024.*

Proposed Improvements: The Safe Passage Project will advance plans for raised bikeways and new sidewalks on Watt Avenue between Roseville Road to Peacekeeper Way, with ADA upgrades and design elements consistent with current accessibility standards. The sidewalk-level raised bikeway will be adjacent to 8-foot sidewalks along both sides of Watt Avenue. Continuous sidewalks will also include ADA-compliant features such as curb ramps and tactile paving to enhance accessibility for all users, including those with disabilities. Physically separated bikeways will provide a safe and protected space for bicyclists. This will make biking along Watt Avenue safer and more appealing, encouraging more community members to use bicycles for their daily commutes and other activities.

The Project will also signalize and narrow the turn radius of channelized right-turn lanes at the intersection with Roseville Road to improve pedestrian and bicyclist crossings. The southbound channelized right turn lane will be significantly modified to support safe crossing.

Location: Watt Avenue, between Roseville Road and Peacekeeper Way, in North Highlands



Additional Photos:



Existing Corrugated Metal Pipe tunnel:



Existing Roadway (looking north):

